

How to RDP to a Windows VM

Contents

I. General.....	2
II. Allow RDP from within the OS	3
A. Allow remote connection.....	3
B. Allow inbound connection on the firewall.....	4
III. Configure network securities on the portal.....	6
A. Non-VPC network (flat network)	6
B. VPC network.....	6

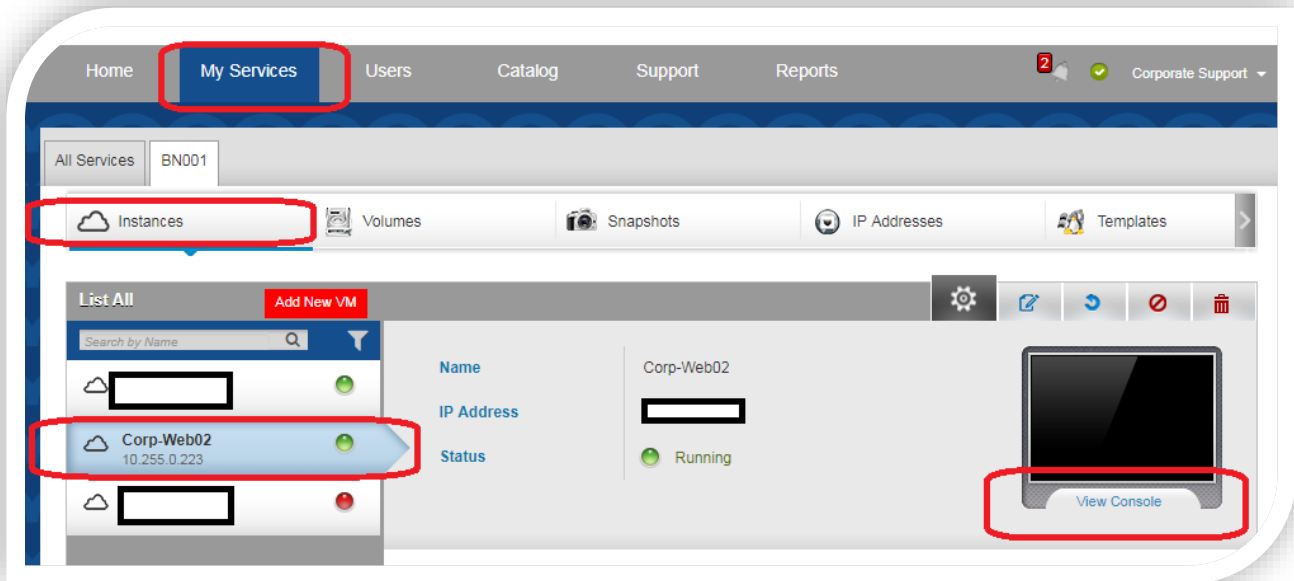
I. General

- Below is a summary of the steps that needs to be performed before being able to RDP to a Windows VM. We will use a Windows Server 2012 R2 OS as example and will assume that it has already been created and belongs to a network with a public IP
 - o For non-VPC networks:
 - Configure the firewall
 - Configure the port forwarding
 - Allow RDP from within the OS
 - o For VPC networks:
 - Configure the ACL list
 - Allow RDP from within the OS
- **All the above steps are a minimum to be completed** before you can use RDP connection with your Windows VM. There is more than one way to configure the RDP connection based on your requirements and especially based on your environment. You may need to adapt some steps based on your environment.
- For ease of use, we breakdown the steps into two chapters (**II** and **III** need to be completed before you can access your VM by RDP)

II. Allow RDP from within the OS

A. Allow remote connection

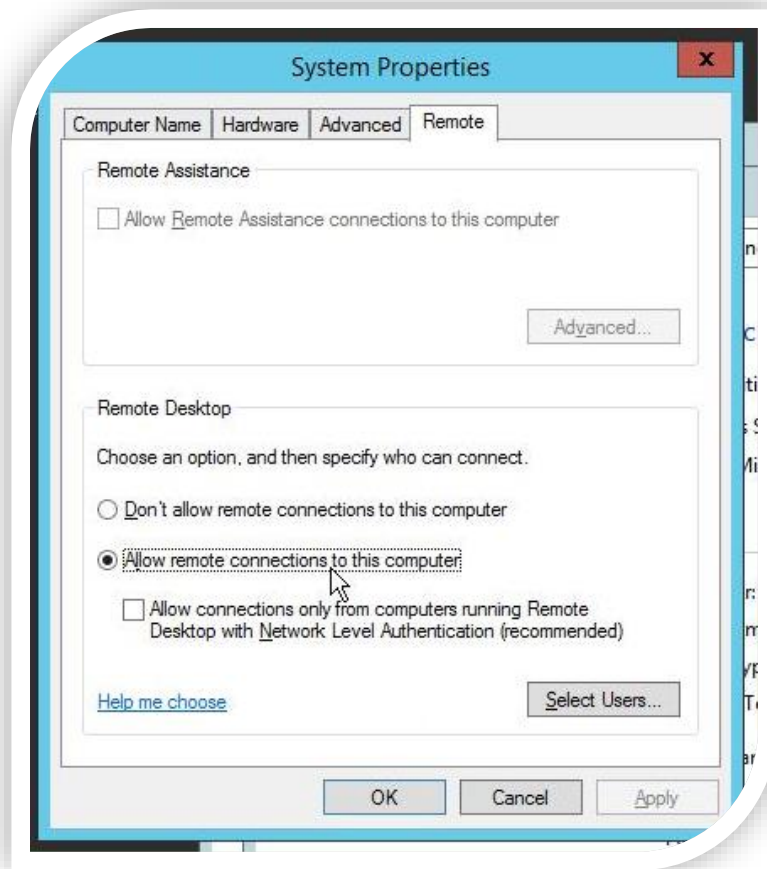
- Connect to your Web Portal and go to the **GIOCloud Portal**
- Go to **My Services > Manage Resources > Instances** tab
- Select the Windows VM and click on **View Console**



- On your Windows Server 2012, go to **Control Panel > System and Security > System**
- Click on **Remote Settings**



- On the **Remote** tab, **Allow remote connections to this computer**
- You can configure other options based on your preferences and if you need additional security on this tab, but for our example, we will leave the remaining as it is

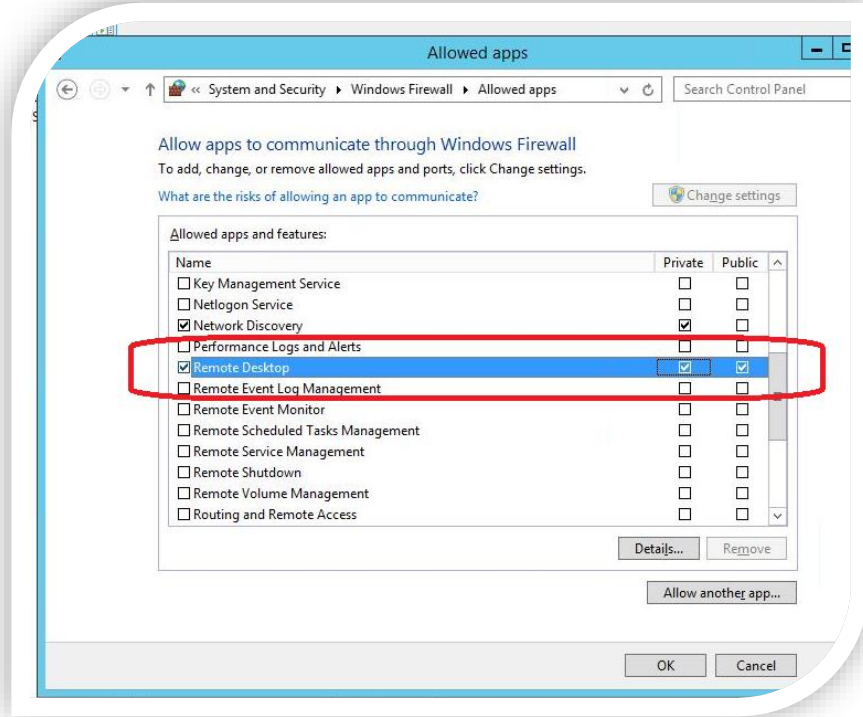


B. Allow inbound connection on the firewall

- On Windows Server 2012, go to **Control Panel > System and Security > Allow an app through Windows Firewall**



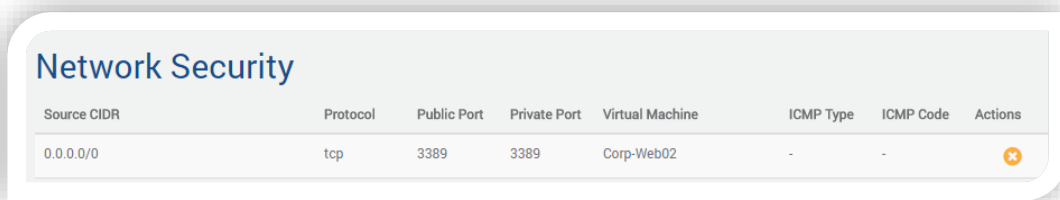
- Make sure **Remote Desktop** is checked for the **Public** column or else, **check it** and click on **OK**



III. Configure network securities on the portal

A. Non-VPC network (flat network)

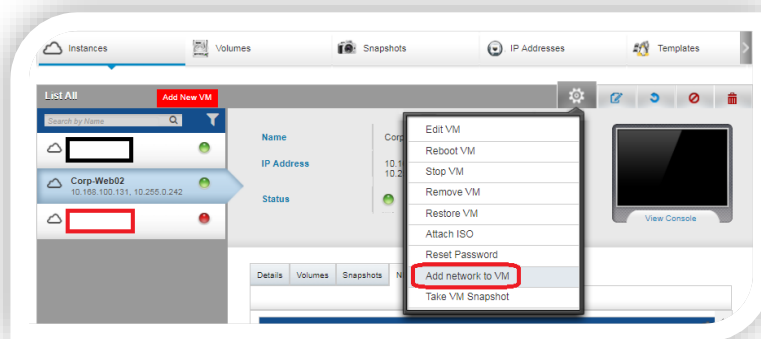
- Assuming that your VM belongs to the default network or to a non-VPC network
- Connect to your **Web Portal** and click on **IP ADDRESS LIST**
- Add a new **Network Security** rule to the network the VM belongs to. By adding a **Network Security rule**, it actually adds a port **forwarding rule** and a **firewall rule** both at the same time
 - o **Source CIDR:** 0.0.0.0/0 (you can use another source based on your requirements)
 - o **Protocol:** tcp
 - o **Public Port:** 3389 (you can choose another port for security reasons)
 - o **Private Port:** 3389 (you can choose another port for security reasons)
 - o **Virtual Machine:** select your Windows server VM that you need to RDP to
- Click on the **+ sign** to add the rule
- Your new rule should look like the below after being added



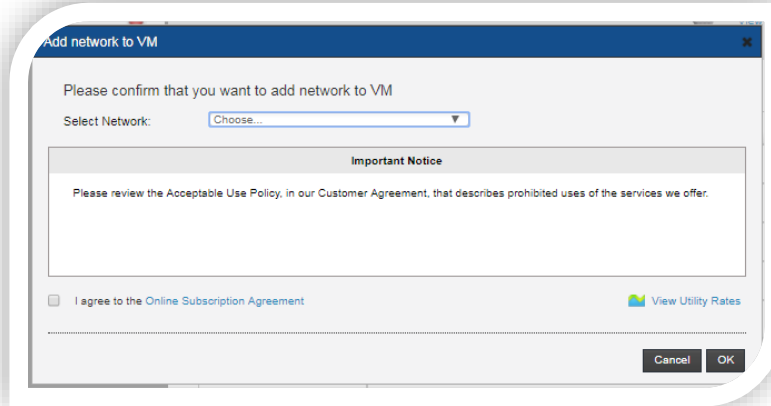
- Note that similar steps for the above can be performed from the **GIOCloud Portal** as well, but it will require to add a **firewall rule** and a **port forwarding rule** one at a time
- You should now be able to RDP to your VM from your client (Use the public IP to RDP to the VM)

B. VPC network

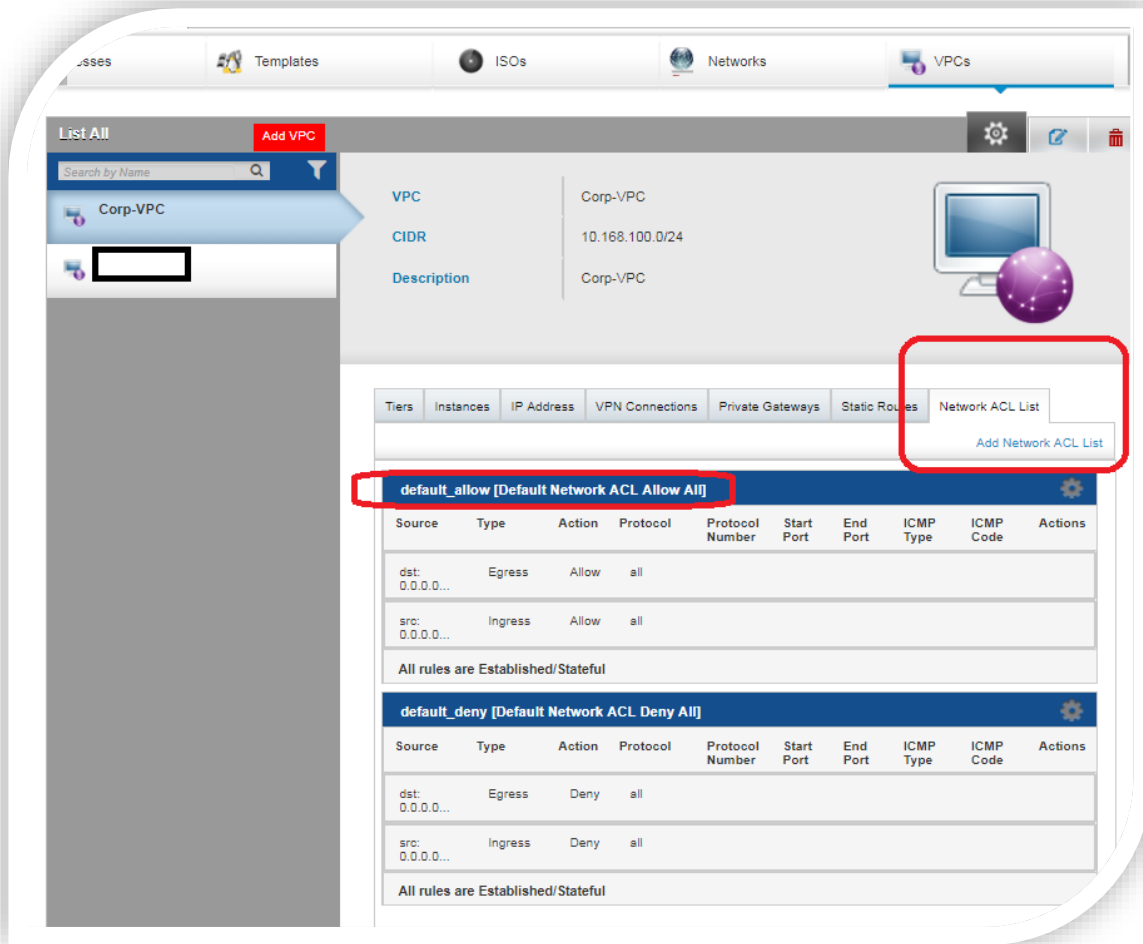
- We assume that a VPC network is already created and a tier/network has already been created/added to the VPC
- Add the VM to the VPC network by adding an additional NIC to the VM. Go to the **Instances** tab, select your VM, click on the **gear icon**, and select **Add Network to VM**



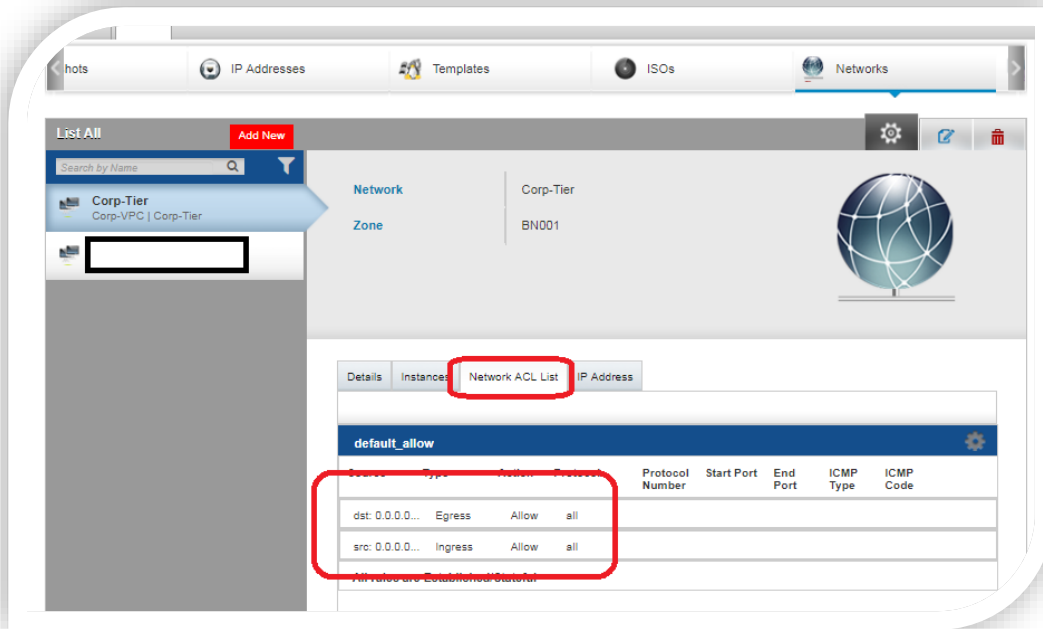
- Select the VM the **VPC network**, agree on the **Online Subscription Agreement**, and click on **OK**



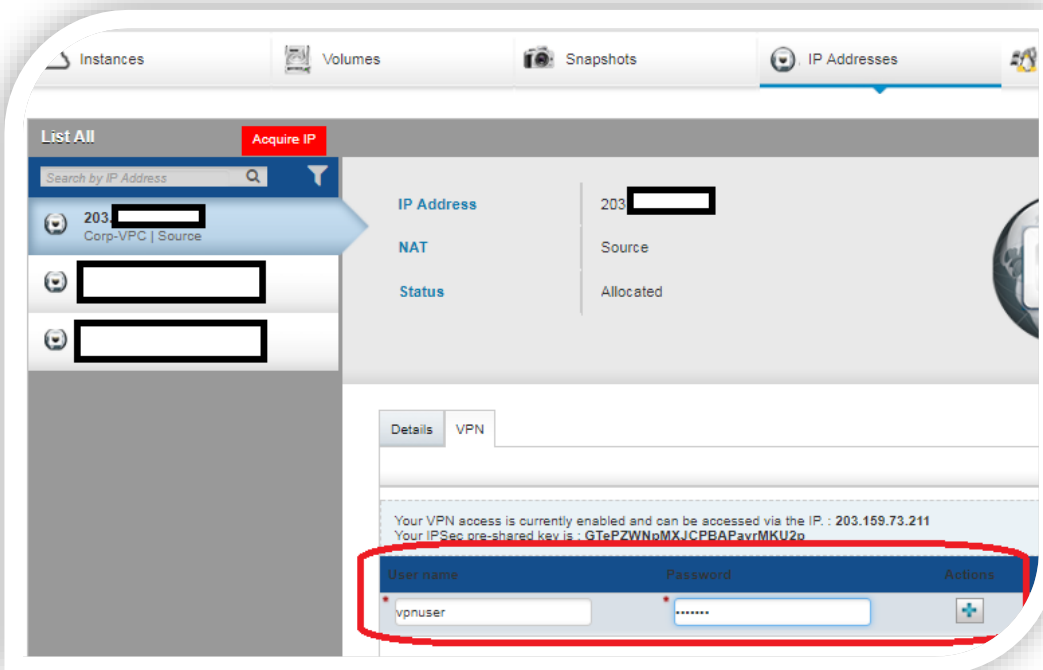
- On the **VPC** tab, you can create a **Custom ACL** rule that allows RDP connection on the VPC or use the **default_Allow** rule that already exists



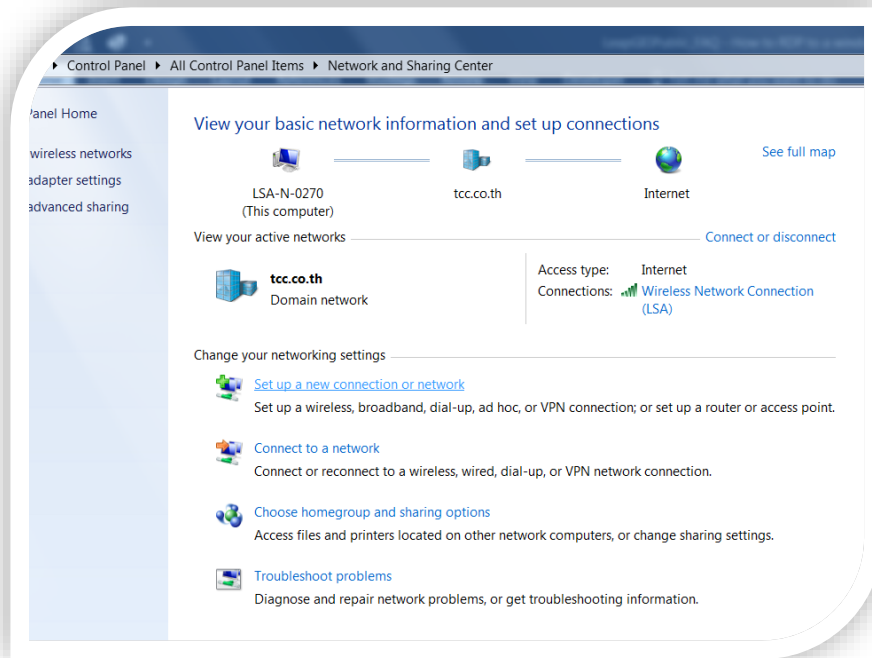
- From the **Networks** tab, select your VPC tier/network, go to the **Network ACL List** tab and make sure that the rule allows RDP connections. In our example, we make it simple and select **Allow All**, but you can configure the rule based on your security requirements.



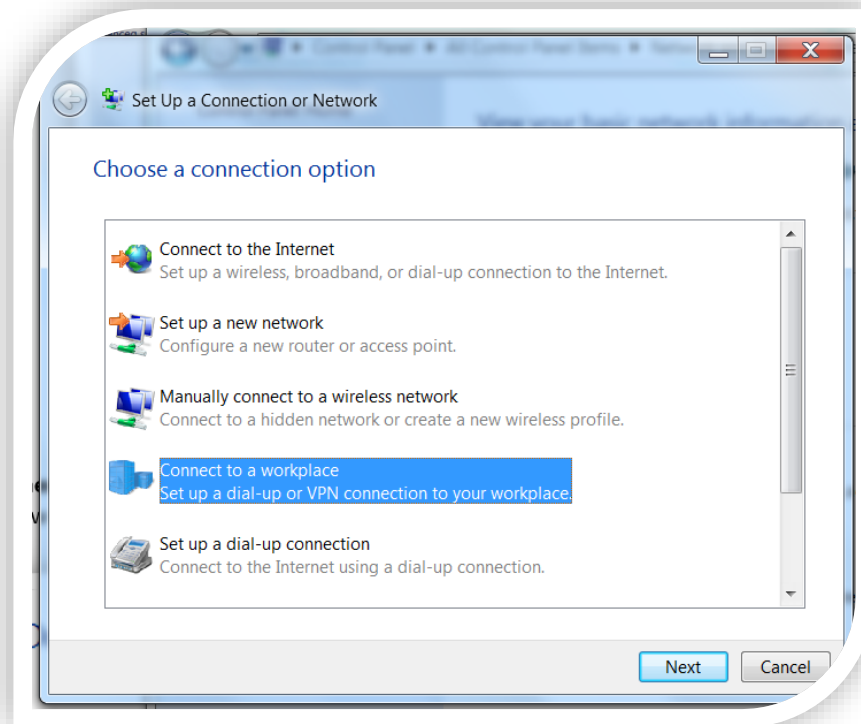
- From the **IP Addresses** tab, select the public IP of your VPC, and go to the **VPN** tab. Create a **username** and a **password** (make it hard for security reasons) and click on “+” to add it.



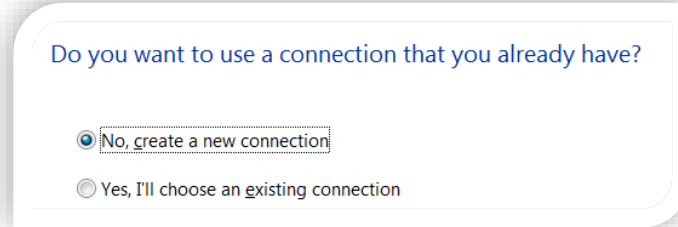
- From your client machine that you wish to use to RDP to the VM, go to **Control Panel > Network and Internet > Network and Sharing Center**
- Click on **Set Up a Connection or Network**



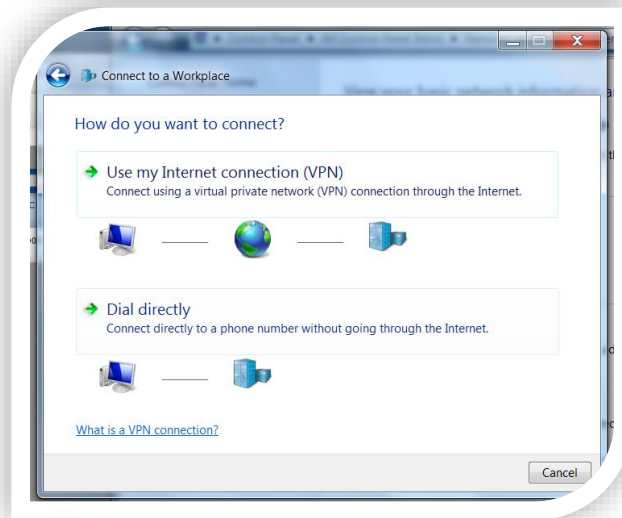
- Select **Connect to a workplace** and click on **Next**



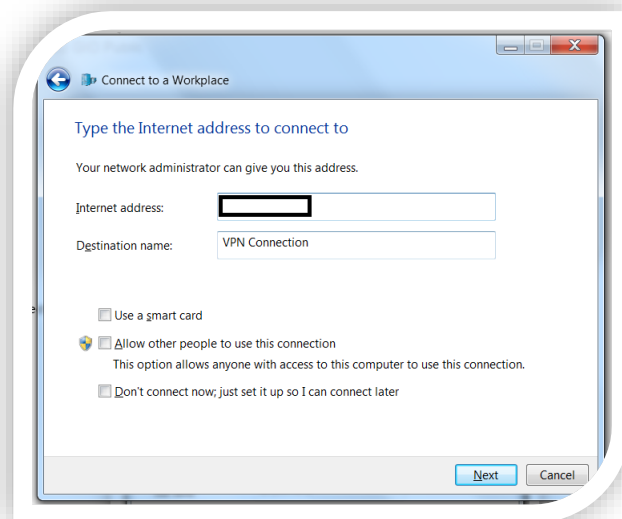
- Create a new connection



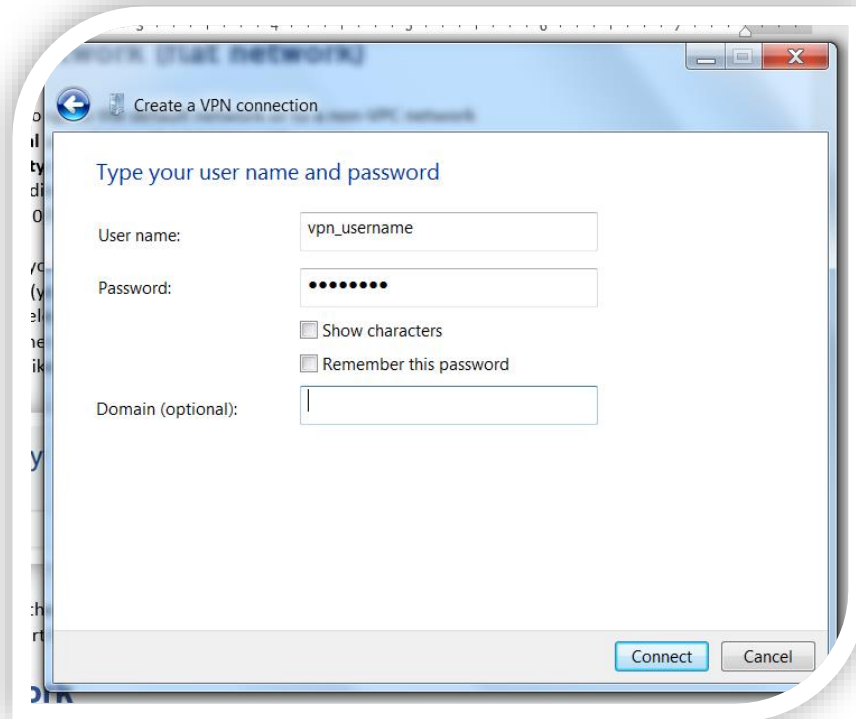
- Select **Use my Internet connection (VPN)**



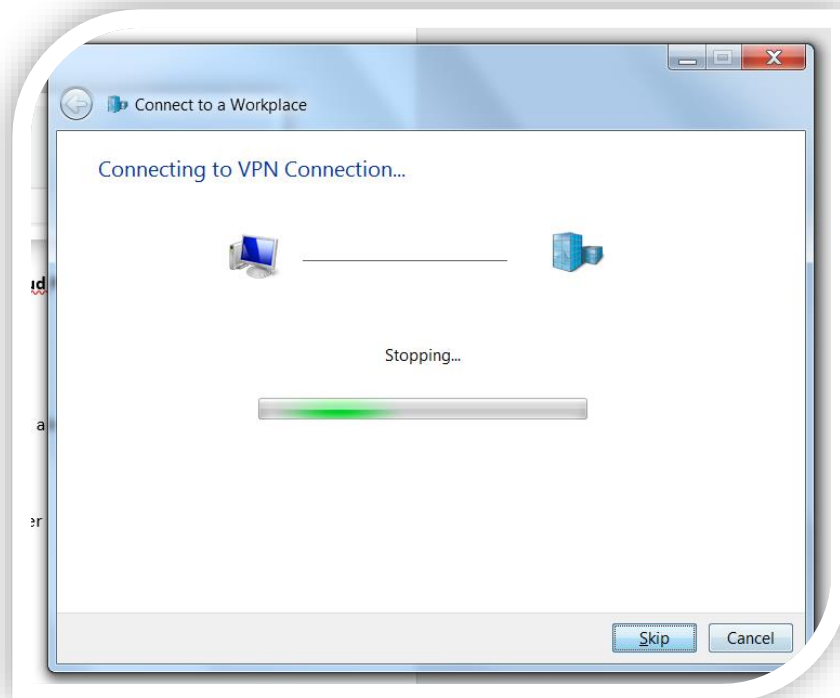
- Input the public IP of the VPC network in the **Internet address** field. Modify the other options based on your requirements and click **Next**



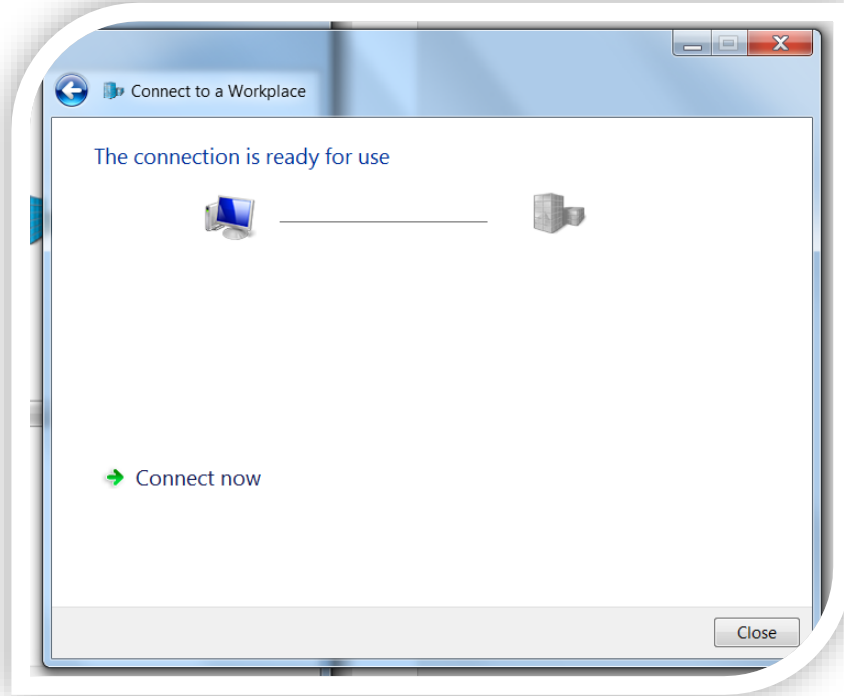
- Input the **username** and the **password** to connect to the VPN (Previously created on the GIOCloud Portal). **Domain** is optional. Click **Connect**.



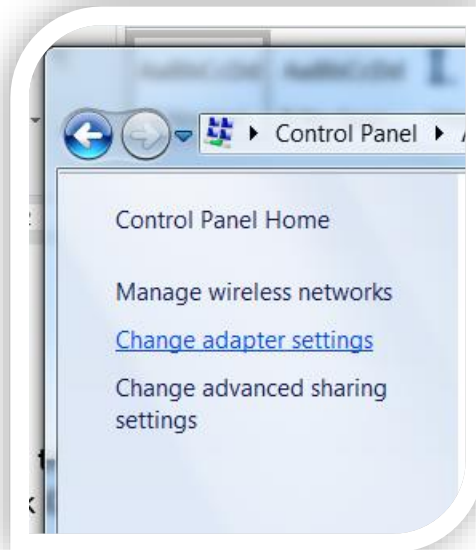
- Click on **Skip**



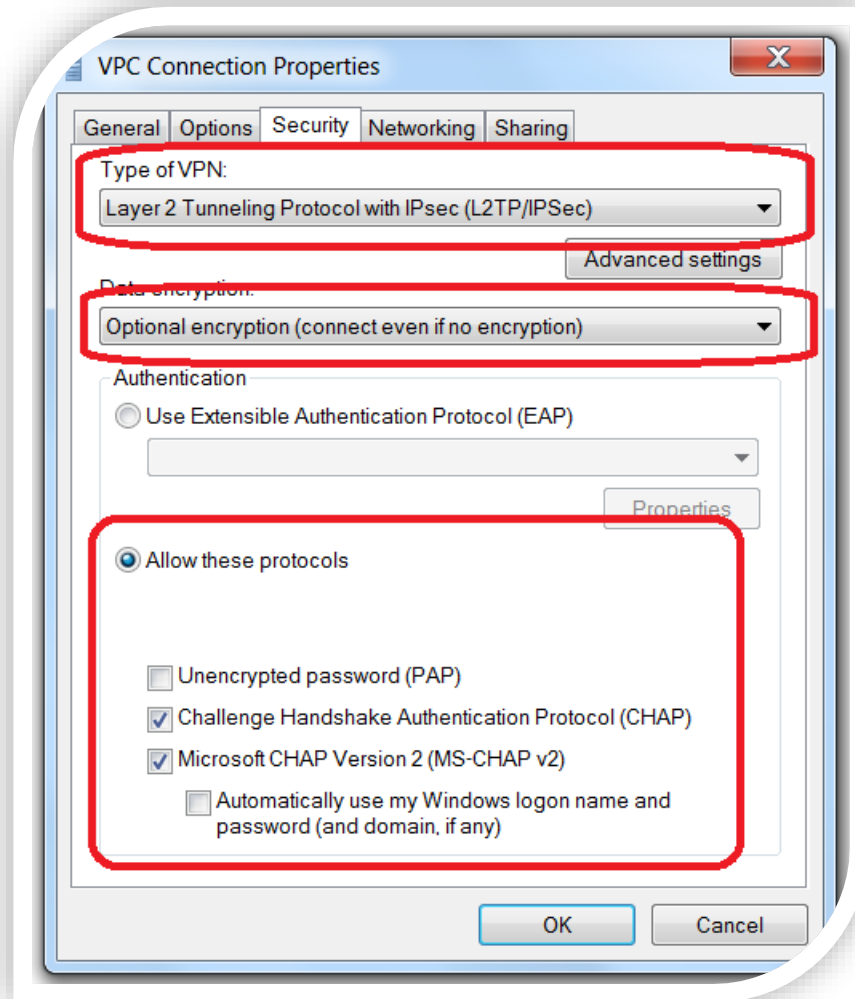
- Click on **Close**



- Go to **Control Panel > Network and Sharing Center > Change Adapter Settings**



- Right click on the newly created VPN connection and click on **Properties**
- Click on the **Security** tab, select the same options as seen on the following screenshot, and click on **OK**



- You should now be able to RDP to your VM from your client (Use the Private IP to RDP to the VM)

If you have any questions please check our FAQ section. If you still cannot find what you are looking for or believe that there is a careless mistake in this document, please contact our support at support@leapsolutions.co.th or send us your inquiry through our [Inquiry Form](#) located on your Web Portal.